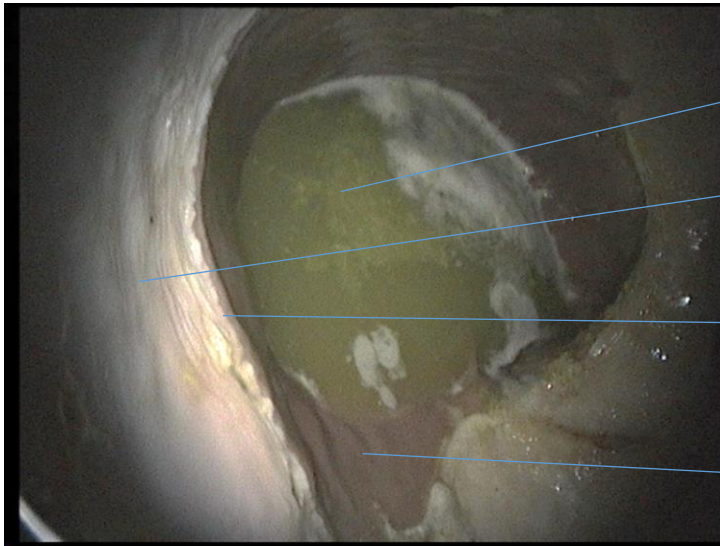


Equine Gastric Ulceration Syndrome (EGUS)



Water/food material in the bottom of the stomach

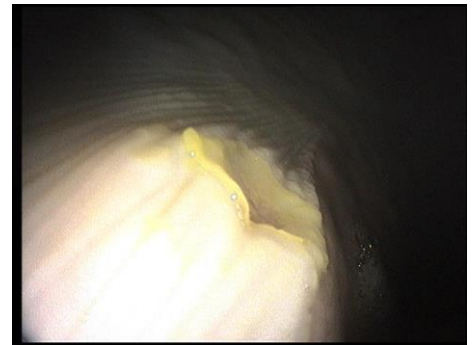
Squamous mucosa in the top of the stomach

Margo Plicatus (delineation between top (squamous mucosa) of stomach and bottom (glandular mucosa) of stomach)

Glandular mucosa in bottom part of stomach. Leads to Pylorus (outflow to intestines).

Symptoms include:

- Recurrent colic
- Weight loss
- Poor appetite
- Coat changes
- Poor performance
- Behavioural changes
- Discomfort when girthing



Diagnosis: Gastroscopy is the only accurate way to diagnose EGUS. This is done under standing sedation at your own yard using our portable video system. A camera is passed up the horse's nose and down to the stomach. Horses must be starved for 16 hours prior to examination and have water removed 1-2 hours before we start.

South Moor Equine



01548 830210

 South Moor Equine Vets

www.southmoorequine.co.uk